

PRODUCT. 01

F/T Sensor

RFT series is a capacitive type 6-axes force/torque sensor with the lower price/performance ratio for the use with collaborate robots and industrial robots. The sensor has an innovative structure design and a robust calibration algorithm to achieve both of cost competitiveness and reliable performance. It provides users with various interface options for communication with their robots or devices. It was primarily designed to resist against an external impact or an excessive load. It is also temperature compensated for the use in various environments.



RFT80-6A02

Medium-sized model with high resolution

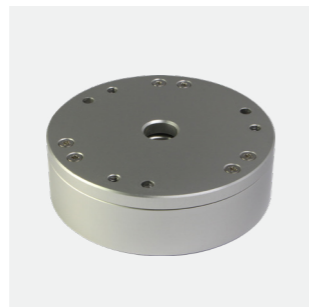
Rated Capacity
400N(force) | 20Nm(torque)
Resolution
0.08N(force) | 0.004Nm(torque)
Overload Capacity
300%FS
Temperature Compensation
Embedded EtherCAT board
Dimension & Weight
80(D)x30(H)mm | 294g



RFT64-6A01

Small-sized model with high resolution

Rated Capacity
200N(force) | 10Nm(torque)
Resolution
0.08N(force) | 0.004Nm(torque)
Overload Capacity
300%FS
Temperature Compensation
Embedded EtherCAT board
Dimension & Weight
64(D)x30(H)mm | 175g



RFT60-HA01

Small-sized model with high resolution

Rated Capacity
200N(force) | 4.5Nm(torque)
Resolution
0.15N(force) | 0.005Nm(torque)
Overload Capacity
150%FS
Dimension & Weight
60(D)x18.5(H)mm | 70g



RFT40-SA01

Mini-sized model with high resolution

Rated Capacity
100N(force) | 2.5Nm(torque)
Resolution
0.2N(force) | 0.008Nm(torque)
Overload Capacity
150%FS
Dimension & Weight
40(D)x18.5(H)mm | 60g



RFT80-6A01

Medium-sized model with high resolution

Rated Capacity
400N(force) | 20Nm(torque)
Resolution
0.1N(force) | 0.005Nm(torque)
Overload Capacity
200%FS
Dimension & Weight
80(D)x22(H)mm | 226g



RFT64-SB01

Small-sized model with a dust seal

Rated Capacity
200N(force) | 4.5Nm(torque)
Resolution
0.15N(force) | 0.005Nm(torque)
Overload Capacity
150%FS
Dimension & Weight
64(D)x20(H)mm | 140g



RFT44-SB01

Mini-sized model with a dust seal

Rated Capacity
100N(force) | 2.5Nm(torque)
Resolution
0.2N(force) | 0.008Nm(torque)
Overload Capacity
150%FS
Dust Resistant Seal
Dimension & Weight
44(D)x20(H)mm | 120g

RFT SERIES

Specification Table

| Item | Unit | RFT40-SA01 | RFT44-SB01 | RFT60-HA01 | RFT64-SB01 | RFT64-6A01 | RFT80-6A01 | RFT80-6A02 | RFTEC-02 | |
|-------------------|-----------------------------|--|------------|------------|------------|------------|------------|------------|-----------|--------------------------------------|
| Dimension | Diameter | mm | 40 | 44 | 60 | 64 | 64 | 80 | 80 | 120 x 75 |
| | Height | mm | 18.5 | 20 | 18.5 | 20 | 30 | 22 | 30 | 20 |
| Data Rate | (maximum) | Hz | 200 | 200 | 1,000 | 1,000 | 1,000 | 1,000 | 1,000 | 1,000 |
| Load Capacity | Fx, Fy | N | 100 | 100 | 150 | 150 | 200 | 400 | 400 | "Robot cable (3 meters) RFTC-6AE-R3" |
| | Fz | N | 150 | 150 | 200 | 200 | 200 | 400 | 400 | |
| | Tx, Ty, Tz | Nm | 2.5 | 2.5 | 4 | 4 | 10 | 20 | 20 | |
| Resolution | Fx, Fy | mN | 200 | 200 | 100 | 150 | 80 | 100 | 80 | - |
| | Fz | mN | 200 | 200 | 150 | 200 | 80 | 100 | 80 | - |
| | Tx, Ty, Tz | mNm | 8 | 8 | 5 | 5 | 4 | 5 | 4 | - |
| Overload Capacity | Fx, Fy | % | 150 | 150 | 150 | 150 | 300 | 150 | 300 | - |
| | Fz+ (Fz-) | % | 150 (300) | 150 (300) | 150 (300) | 150 (300) | 300 (300) | 200 (400) | 300 (300) | - |
| | Tx, Ty, Tz | % | 150 | 150 | 150 | 150 | 300 | 200 | 300 | - |
| Hysteresis | Fx, Fy | %FS | 2 | 2.5 | 2.5 | 3 | 1 | 2.5 | 1 | - |
| | Fz | %FS | 0.5 | 1 | 1 | 2 | 1.5 | 1 | 1.5 | - |
| | Tx, Ty, Tz | %FS | 1 | 3 | 1 | 2 | 2 | 1 | 2 | - |
| Cross Talk | Fx, Fy | %FS | 3 | 3 | 3 | 3 | 3 | 3 | 3 | - |
| | Fz | %FS | 3 | 3 | 3 | 3 | 3 | 3 | 3 | - |
| | Tx, Ty, Tz | %FS | 3 | 3 | 3 | 3 | 3 | 3 | 3 | - |
| Weight(w/o cable) | g | 60 | 70 | 120 | 140 | 175 | 226 | 294 | 66 | |
| Power Requirement | W, VDC | 0.5W @5VDC (1.5W@5VDC for EtherCAT models) | | | | | | | | 2.5W @24VDC |
| Output Interface | optional | CAN RS232 RS422 USB EtherCAT | | | | | | | | EtherCAT |
| Product Image | | | | | | | | | | |
| Feature | Hollow Core ○ / Dust Seal ● | - | ● | ○ | ● | - | ○ | - | - | - |
| | Temperature Compensation | - | - | - | - | ● | - | ● | - | - |
| | Embedded EtherCAT Option | - | - | - | - | ● | - | ● | - | - |